

# DURALEC SP50

BOOM LIFT



## DURALEC SP50 4X4 HYBRID BOOM LIFT

The SP50 4x4 offers one of the most impressive working envelopes in its class.

Its compact base allows it to maneuver easily in enclosed spaces and its extremely low overall weight helps to minimize transportation costs.

The SP50 4x4's 5ft 11in wide ToughCage offers more space for materials and tools and a 150° jib-boom with 180° cage rotation increases accuracy when positioning the cage. The tough, impact-resistant composite base and larger cross-section steel rails of the ToughCage give strength and durability, while the multi-award-winning SiOPS® provides additional user protection.

The SP50 4x4 is available with two power options, Diesel-only or Hybrid power.

- Load Capacity 500 lb
- Raised Height 19' (228")
- Lowered Height 86"
- Overall dimensions: Length 65" x Width 30"
- Steel construction
- 3 Years Limited Warranty



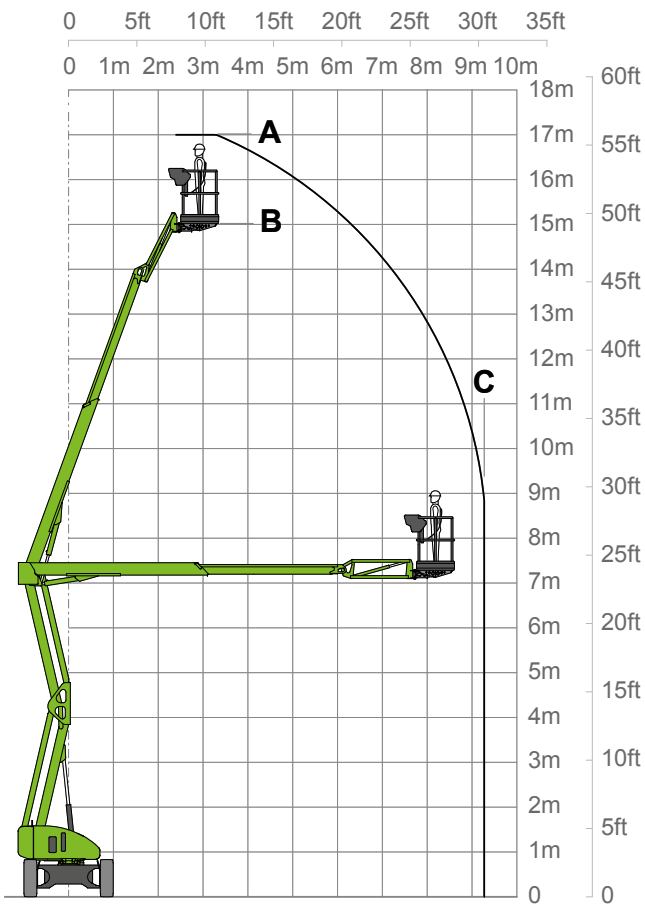
### Product performance

Machine Outreach	31'
Platform size (length EX width FX height G)	33"x71"
Travel Speed	3.7 MPH
Gradeability	45% / 24°
Turning Radius	12.33'
Minimum Weight	11290 lbs
Safe Working Load	500 lbs
Jib Boom Arc	150°
Basket Rotation	180°
Hybrid Power	Battery & Diesel
Drive	4x4



# DURALEC SP50 4X4 HYBRID BOOM LIFT

DESCRIPTION	DIMS
Max working height	56.5' (678")
Max platform height	50' (600")
Machine Length	20.83' (250")
Machine Width	6.65' (79")



## Product hire pricing

PRODUCT	PERIOD	PRICE
50ft Boom Lift	Day hire	\$325
50ft Boom Lift	Week hire	\$700
50ft Boom Lift	month hire	\$2500

