

INTRINSIX



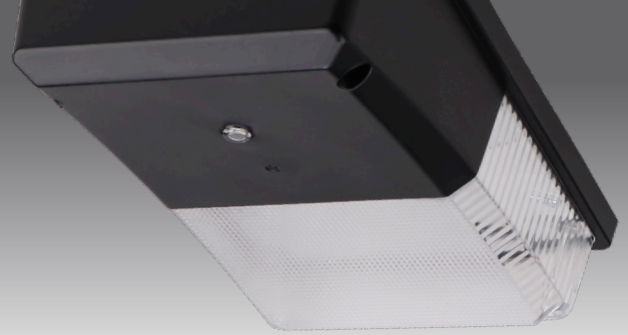
MINI-LUNA

WALL PACK

PRODUCT PROFILE

LUNA MINI

WALL PACK



Description

The IntrinsiX Luna LED Mini Wall Pack is the best in its class for power efficiency when it comes to wall-mounted security.

With our selection of LED wall pack lights, you get powerful lighting that is just right for your space.

With the use of the IntrinsiX Luna Mini wall pack lights and the integrated Photocell capabilities you have control, you get the incredible power of LED lights combined with the sturdy construction needed for outdoor lighting.

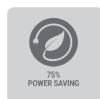
Specifications

- Photocell: Integrated
- Voltage: 120 -277V, 50-60Hz.
- Efficacy: 125-140Lm/Wt
- Operating Temp: -4°F to 113°F
- Dimming: 0-10V
- IP Rating: IP65
- Power Factor: >0.90
- DLC Listing: Premium
- Warranty: 50,000 Hours/5 Years

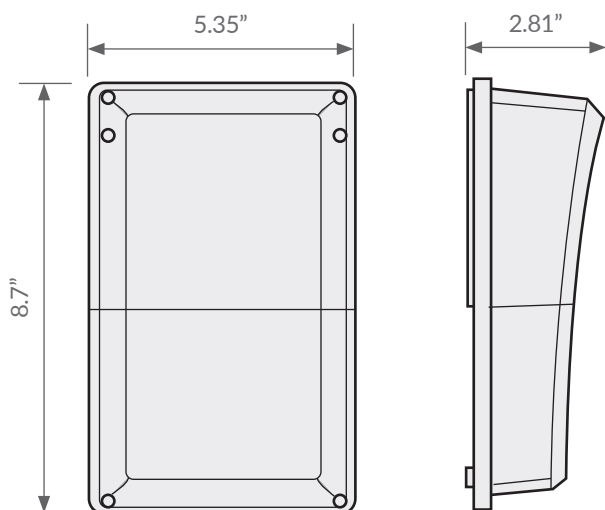


Wall Pack Fixture Details

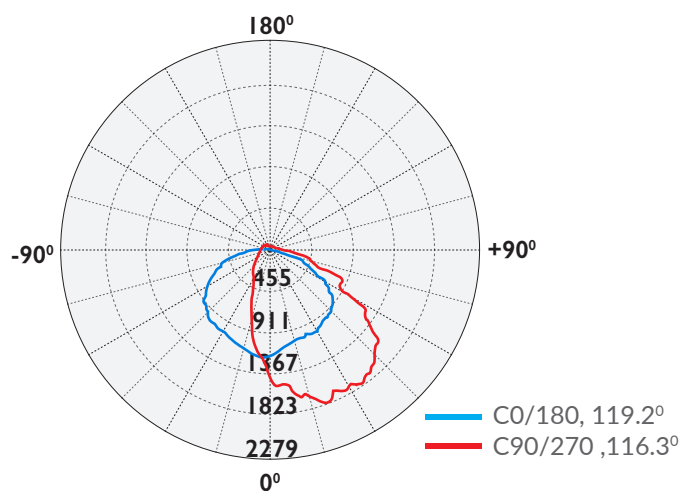
Product Number	Power (W) Adjustable	CCT (K) Optional	CRI	Efficacy (Lm/W)	Lumens Output Temperature (Lm)	Operating Temperature	IP Rating	DLC Product ID
IX-MWP-30S-30/40/50LO	15/20/30	3000/4000/5000	80+	125/141/134	3700/4200/4000	-4°F to 113°F	IP65	TBA



Product Dimensions



Distribution Diagram



Average Beam Angle: (50%) : 101.7°



Intertek

The ETL Listed mark is an indicator of the product's compliance with safety regulations, recognized and accepted by the UL and CSA marks. As Intertek's ETL subjects' products to UL standards for safety, products marked as ETL Listed meet the same rigorous criteria as marked with UL Listed or UL Recognized. Intertek ETL is a Nationally Recognized Testing Laboratory (NRTL) recognized by the Occupational Safety and Health Administration (OSHA).



The Federal Communications Commission (FCC) is an independent agency of the United States government that was created to regulate all forms of telecommunication inside of the U.S., including the radio frequency (RF) of electronics. Our products are fully tested ensure that they will not electromagnetically interfere with other products nor cause risk to the public as required by law.