

INTRINSIX

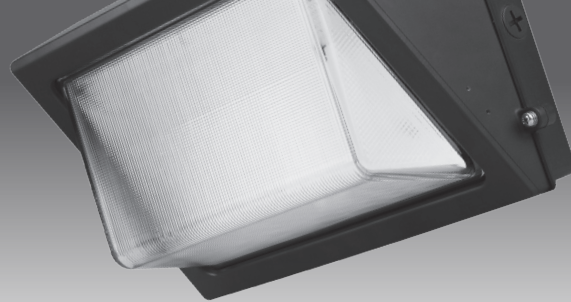


LUNA

PRODUCT PROFILE

LUNA

LED SEMI-CUTOFF WALL PACK



Description

The LUNA LED Semi-Cutoff Wall Pack is the best in its class for power efficiency when it comes to wall-mounted security. They are great for a range of commercial applications including parking lots, shopping malls, hospitals, walkways, and any other outdoor areas in need of adequate lighting.

With the use of the IntrinsiX LUNA LED Semi-Cutoff Wall Pack lights, you get the incredible power of LED lights combined with the sturdy construction needed for outdoor lighting.

The LUNA provides security lighting with control over the energy efficiency with its integrated Photocell capabilities. These security lights are more economical, replacing the HID or HPS lights, consuming less electricity and giving you even brighter lighting compared to conventional lights.

Specifications

- Photocell: Integrated
- Voltage: 120-277VAC
- IP Rating: IP65
- Operating Temp: -40°F to 122°F
- Power Factor: >0.9
- DLC: Premium
- Warranty: 50,000 hours/5 Years



Wall Pack Fixture Details

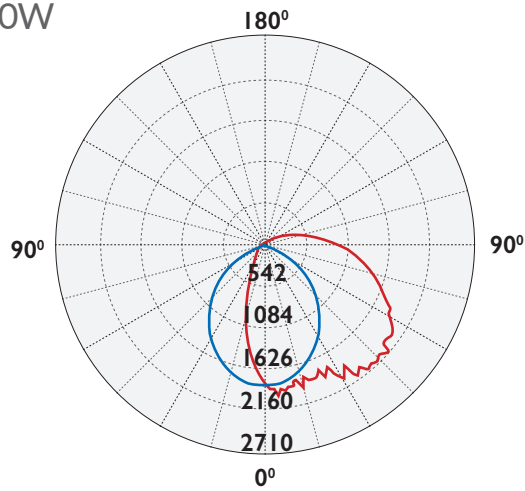
Product Number	Power (Watts)	CCT (K) Optional	CRI	Efficacy (lm/W)	Lumens Output Temperature (Lm)	Operating Temperature	IP Rating	DLC Product ID
IX-SWP-25/30/40-30/40/50LO	25/30/40W	3000/4000/5000K	>80	136-140	5440-5600	-40°F to 122°F	IP65	S-NY8YZG
IX-SWP-45/60/80-30/40/50LO	45/60/80W	3000/4000/5000K	>80	139-142	11080-11290	-40°F to 122°F	IP65	S-7DTZX9
IX-SWP-80/100/120-30/40/50LO	80/100/120W	3000/4000/5000K	>80	138-152	17140-17250	-40°F to 122°F	IP65	S-PCMTY7



Distribution Diagram

IX-SWP-40/30/25-30/40/50LO

40W

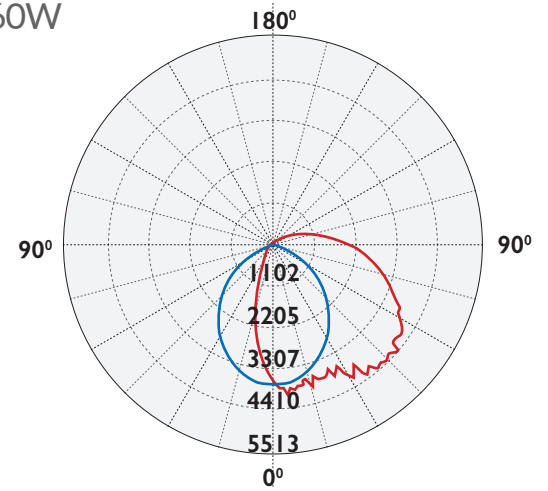


— C90/270
— C0/180

Average Beam Angle: (50%) : 95.5°

IX-SWP-80/60/45-30/40/50LO

60W

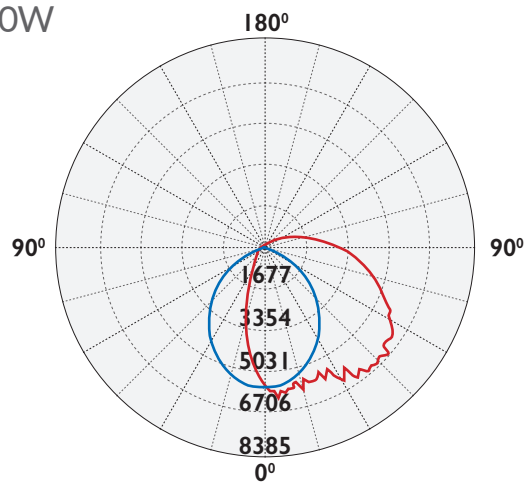


— C90/270
— C0/180

Average Beam Angle: (50%) : 96.5°

IX-SWP-120/100/80-30/40/50LO

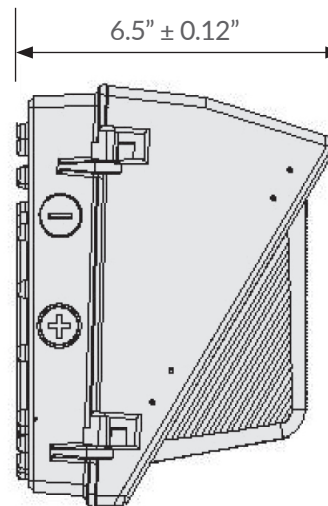
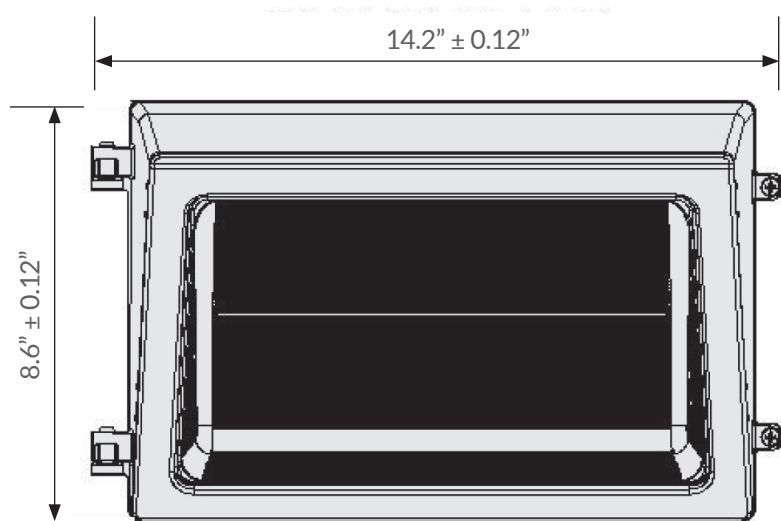
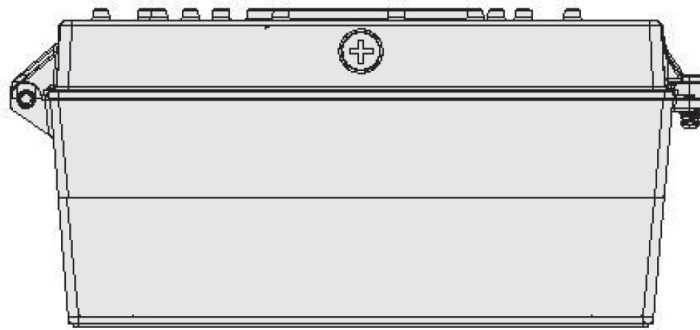
80W



— C90/270
— C0/180

Average Beam Angle: (50%) : 97.3°

Product Dimensions



The ETL Listed mark is an indicator of the product's compliance with safety regulations, recognized and accepted by the UL and CSA marks. As Intertek's ETL subjects' products to UL standards for safety, products marked as ETL Listed meet the same ridged criteria as marked with UL Lister or UL Recognized. Intertek ETL is a Nationally Recognized Testing Laboratory (NRTL) recognized by the Occupational Safety and Health Administration (OSHA).



The Federal Communications Commission (FCC) is an independent agency of the United States government that was created to regulate all forms of telecommunication inside of the U.S. including the radio frequency (RF) of electronics. Our products are fully tested ensure that they will not electromagnetically interfere with other products nor cause risk to the public as required by law.