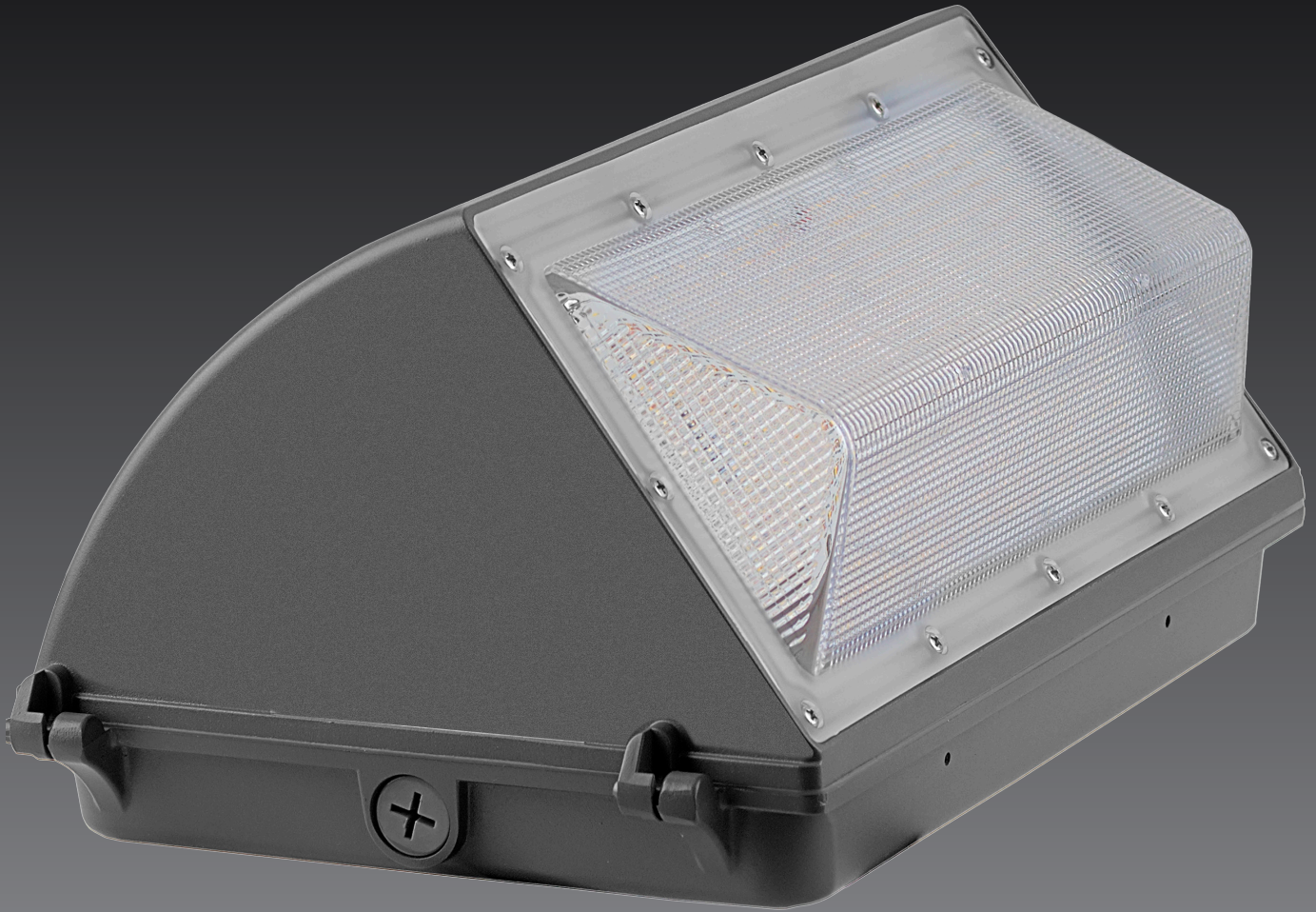


INTRINSIX

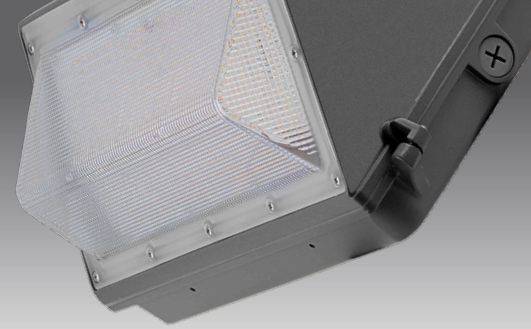


ECLIPSE  
SEMI CUT

PRODUCT PROFILE

# ECLIPSE

## SEMI-CUT WALL PACK



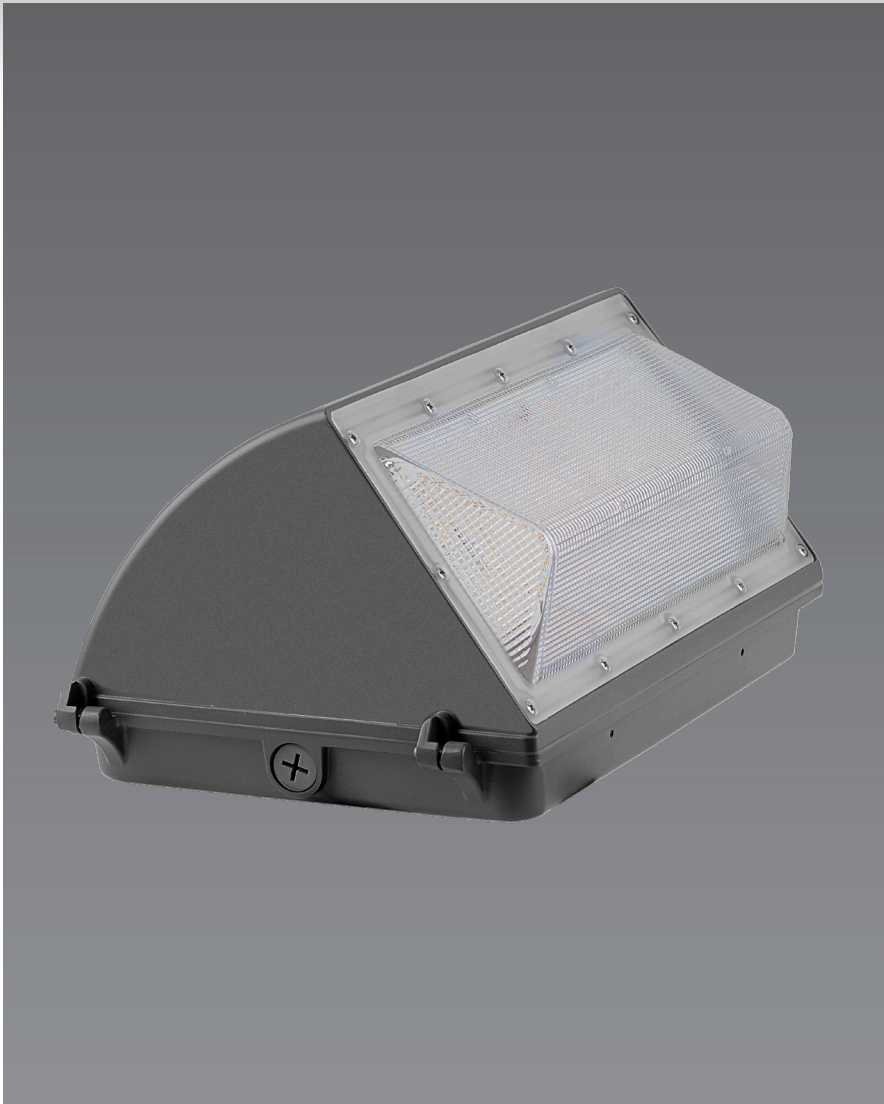
### Description

The ECLIPSE LED Semi Cut Wall Pack is the best in its class for power efficiency when it comes to wall-mounted security.

They are great for a range of commercial applications including parking lots, shopping malls, hospitals, walkways, and any other outdoor areas in need of adequate lighting. With the use of the IntrinsicX ECLIPSE semi-cut wall pack lights, you get the incredible power of LED lights combined with the sturdy construction needed for outdoor lighting.

The ECLIPSE provides security lighting with control over the energy efficiency with its integrated Photocell capabilities.

These security lights are more economical, replacing the HID or HPS lights, consuming less electricity and giving you even brighter lighting compared to conventional lights.



### Specifications

- Photocell: Integrated
- Voltage: 120 to 277V, 50 to 60Hz
- IP Rating: IP65
- Operating Temp: -20°F to 140°F
- Power Factor: >0.95
- DLC: Premium
- Warranty: 50,000 Hours/5 Years

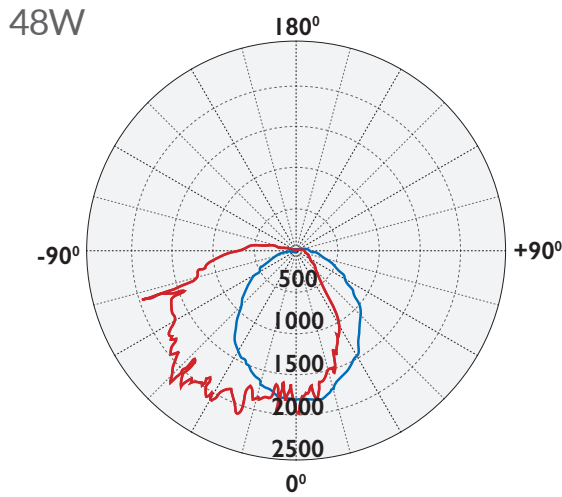
### Wall Pack Fixture Details

Product Number	Power (W)	CCT (K) Optional	CRI	Efficacy (Lm/W)	Lumens Output Temperature (Lm)	Operating Temperature	IP Rating	DLC Product ID
IX-SCWP-48-50LO	48W	5000K	70+	110	5280	-20°F to 140°F	IP65	PLOW8WFD0MSN
IX-SCWP-60-50LO	60W	5000K	70+	110	6600	-20°F to 140°F	IP65	PL5NF3NEDD1X
IX-SCWP-80-50LO	80W	5000K	70+	110	8800	-20°F to 140°F	IP65	PLSOPZ74PMK9
IX-SCWP-100-50LO	100W	5000K	70+	110	11000	-20°F to 140°F	IP65	PLUHGWKPA698
IX-SCWP-130-50LO	130W	5000K	70+	110	14300	-20°F to 140°F	IP65	TBA



# Distribution Diagram

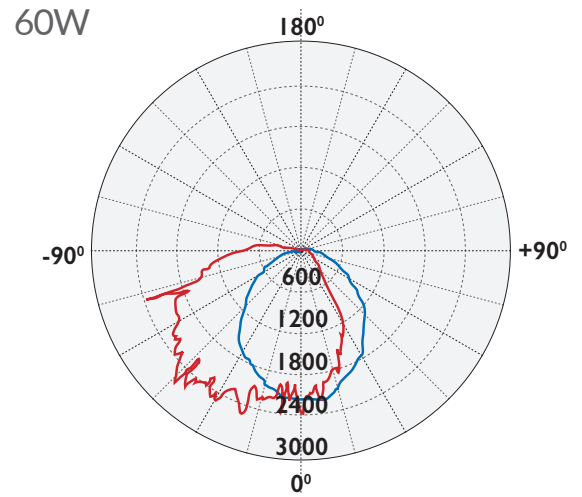
IX-SCWP-48-50L0



— C0/180, 115.4  
— C90/270, 96.9

Average Beam Angle: (50%) : 106.2°

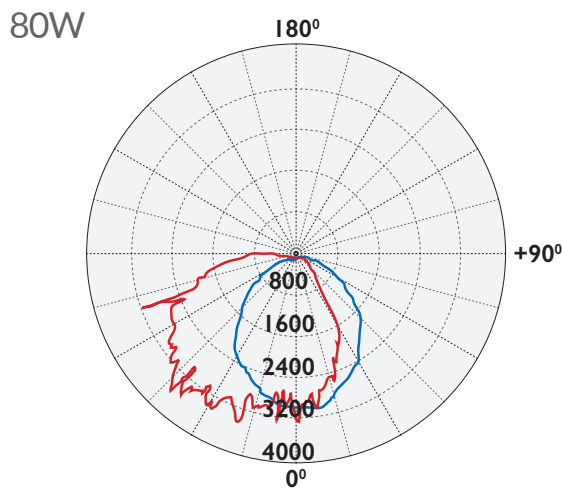
IX-SCWP-60-50L0



— C0/180, 114.2  
— C90/270, 98.8

Average Beam Angle: (50%) : 105.5°

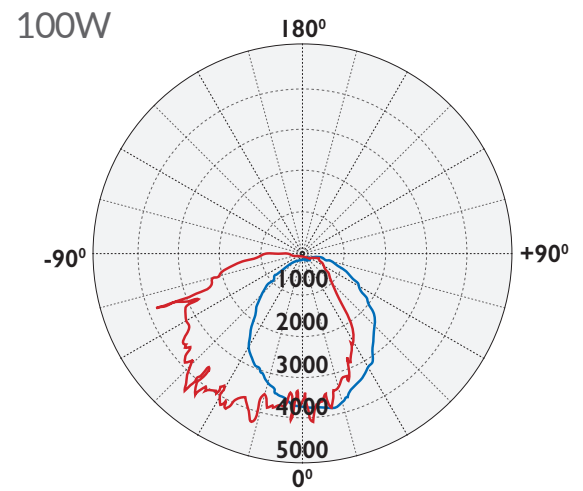
IX-SCWP-80-50L0



— C0/180, 115.6  
— C90/270, 97.0

Average Beam Angle: (50%) : 106.3°

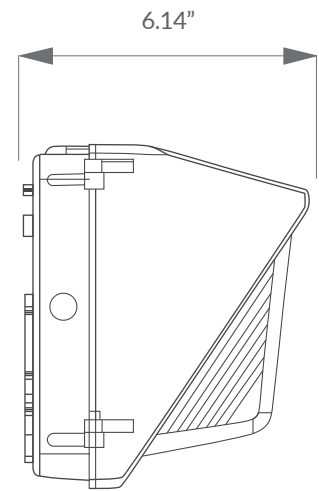
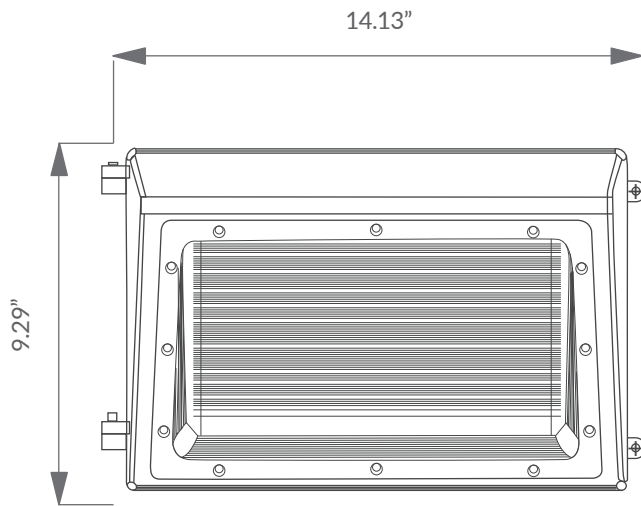
IX-SCWP-100-50L0



— C0/180, 115.6  
— C90/270, 97.1

Average Beam Angle: (50%) : 106.4°

## Product Dimensions



Intertek

The ETL Listed mark is an indicator of the product's compliance with safety regulations, recognized and accepted by the UL and CSA marks. As Intertek's ETL subjects' products to UL standards for safety, products marked as ETL Listed meet the same ridged criteria as marked with UL Lister or UL Recognized. Intertek ETL is a Nationally Recognized Testing Laboratory (NRTL) recognized by the Occupational Safety and Health Administration (OSHA).



The Federal Communications Commission (FCC) is an independent agency of the United States government that was created to regulate all forms of telecommunication inside of the U.S. including the radio frequency (RF) of electronics. Our products are fully tested ensure that they will not electromagnetically interfere with other products nor cause risk to the public as required by law.